



INSTALLATION AND OPERATING INSTRUCTIONS



User Manual for Power Modules and IR Remotes for TERM2000® Infrared Heaters

Models with protection class IP44

TERMCONTROL STE2.0 STE3.0

WARNING: Please read these instructions before installing the heater and follow all recommendations. This manual is an integral part of the device and should be kept in an accessible place; in the event of a change of ownership, it should be handed over to the new owner.



*Manufacturer: TEO TERM, ul. Wiejska 2d, 05-805 Otrębusy
tel.+48 22 822-37-82, 668-95-08, fax +48 22 824-23-27*

Customer Service 801 00 96 95

www.teo-term.com.pl

Purpose

The STE3.0 power module (formerly STE2.0) is designed to switch on, switch off, and regulate the heating power of TERM2000 infrared heaters. It is operated via infrared (IR) remote controls. The module is equipped with an LED indicator that shows the operating status:

- GREEN LED – Blinking: Module is connected to power.
- GREEN LED – Steady: Device is on and the control system is ready.
- RED LED – Steady: Service/programming mode.

Powering on and adjusting the heater is done using the buttons on the remote. Depending on the number of TERM2000 devices being controlled, heaters can be divided into two zones. By default, heaters are programmed as Zone 1 devices. To change this, follow the instructions in the section “Programming the Power Module”.

Turning on the heater

Point the remote at the device and press the red ON button. This is a universal button for all heaters (Zone 1 and Zone 2). The LED on the module will light green steadily.

Adjusting power

Use the “^” or “v” buttons for Zone 1, and “+” or “-” for Zone 2. Each press increases or decreases power by one level: 25%, 50%, 75%, or 100%. The remote confirms command reception via the red LED. For radiating heaters, both light intensity and heat output will change accordingly.

Turning off the heater

Point the remote at the device and press the OFF button. This is a universal button for all heaters (Zone 1 and Zone 2). The module LED will start blinking in green.

WARNING: The module has an over-temperature protection system.

- When the radiator reaches ~110°C, the output power is automatically reduced to 25% (SPP16 module) or 0% (SPP16T module).
- After the radiator cools by 10°C, the module automatically restores the previously set power (e.g., 75%).



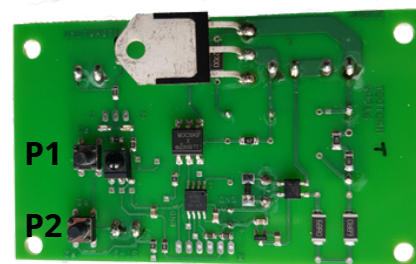
IMPORTANT: Any work on programming the electronic control module must be carried out only by a qualified electrician.

Programming the Power Module – Zone 2

The controller is equipped with a dedicated remote control, with “Zone 1” and “Zone 2” commands stored in its memory.

To program the Power Module for Zone 2:

1. Locate the P1 button on the printed circuit board:
 - STE2.0: Under the gray silicone cover on the front/top of the housing.
 - STE3.0: Remove the side plastic panels and slide out the entire PCB with the heat sink.
2. With the device powered on (green LED blinking), insert the supplied plastic rod into the service hole and press P1 for ~3 seconds. The LED turns red, and the module enters programming mode.
3. Point the remote at the IR receiver and press the four control buttons **in sequence**:
ON → OFF → Increase Power → Decrease Power
- Each command is confirmed by the red LED changing intensity.
4. After the fourth command, the module returns to normal operation, and the LED blinks green.
5. Carefully reassemble the module and replace the service cover.



Programming the Power Module – Auto-Off (STE3.0 only)

1. Press P1 → red LED lights turn on.
2. Press and hold P2 → red LED goes off and then lights again. Release P2 after the first blink.
3. Press P1 to select the desired auto-off time. The red LED blinks, and each additional press increases the number of blinks to set the timer:
 - 1 blink – No auto-off
 - 2 blinks – Auto-off after 2 hours
 - 3 blinks – Auto-off after 3 hours
 - 4 blinks – Auto-off after 4 hours

The module automatically exits programming mode ~10 seconds after the last button press.

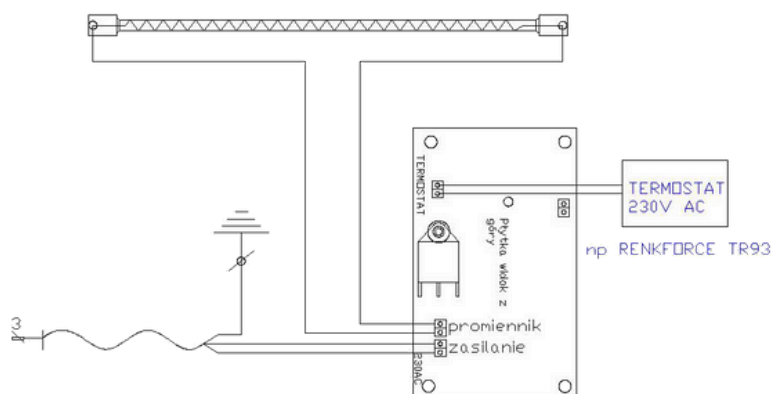
Integration with Room Thermostat (STE3.0 only; from serial number 138421)

When connected to a thermostat, the heater equipped with a power module STE3.0 will operate under thermostat control.

The TERMCONTROL STE3.0 module allows connection of an external thermostat operating **exclusively** at 230V.

When the heater is connected to the thermostat, once the desired room temperature is reached, the heater reduces power to 25% (or 0% for devices from serial number 21-XXXXX). When the temperature drops, the heater returns to the previously set power level.

To connect the thermostat, use the THERMOSTAT terminal as shown in the diagram.



TERMCONTROL STE 3.0

Power supply: 230V; 50–60 Hz

Maximum load: 3000 W

Weight: 0.6 kg

Protection class: IP44